

# Human Anatomy (ANP300), Fall 2018

Wednesdays 11-2pm in SBS-N-514

Instructor: Sarah Mincer

## Instructor Info:

**Sarah Mincer**

**Office:** SBS S-522

**Email:** sarah.mincer@stonybrook.edu

**Office Hours:** Wednesdays 9-10am, Thursdays 11-1pm and by appointment.

*I will respond to emails within 24 hours. I check it M-F 9am- 6pm, and intermittingly on weekends and holidays.*

## Expectations:

- ❖ Attendance: Be on time and stay for the entire lab!
- ❖ Preparation: Read the chapter before lab, read and color the diagrams, **print out the worksheet for this week's lab** (posted to Blackboard).
- ❖ Participation: Ask questions, answer questions, talk to your classmates.
- ❖ Communication: If you have a conflict, please let me know in advance.

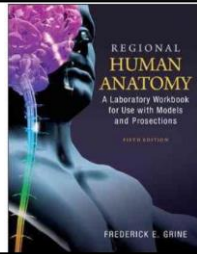
## Lab Rules:

- ❖ If you are early for lab, please wait quietly in the 5<sup>th</sup> floor study lounge (by the elevators). **Do not wait in the hallway outside the lab.** This is disruptive to those who have class/offices on this hallway.
- ❖ No food or drink besides water bottles and covered travel mugs in the lab.
- ❖ **No cell phones, so no texting/facebook/internet. It is distracting and disruptive. If you must take a phone call excuse yourself.**
- ❖ Please treat the models and specimens in the lab with care and handle them properly.
- ❖ Powerpoint slides will be available on Blackboard after that day's lab. However, you still need to come to lab to fully benefit.
- ❖ Worksheet answer keys **will not** be posted to blackboard. If you are unable to find an answer, ask for help during lab, come to office hours, or email.
- ❖ NO cheating on quizzes. Assignments are to be done **individually** but group work is encouraged during lab time and when you study.

Each student must pursue his or her academic goals honestly and be personally accountable for all submitted work. Representing another person's work as your own is always wrong. Faculty is required to report any suspected instances of academic dishonesty to the Academic Judiciary. Faculty in the Health Sciences Center (School of Health Technology & Management, Nursing, Social Welfare, Dental Medicine) and School of Medicine are required to follow their school-specific procedures. For more comprehensive information on academic integrity, including categories of academic dishonesty please refer to the academic judiciary website at [http://www.stonybrook.edu/commcms/academic\\_integrity/index.html](http://www.stonybrook.edu/commcms/academic_integrity/index.html)

## Required Text:

Grine, F.E. (2014). *Regional Human Anatomy. A Laboratory Workbook for Use with Models and Prosections.* 5<sup>th</sup> Edition. McGraw-Hill, New York. ISBN: 978-0-07-337828-2 (approx. \$60)



## Grading:

Your lab grade is worth 25% of your final grade for the course. You will be given 5 quizzes and 1 written assignment. **Your lowest quiz score will be dropped** and the remaining scores will be used to calculate your final lab grade. If you miss a quiz, this will count as your dropped quiz. **There will be no extra credit.**

## Quizzes and Assignments:

### Quizzes

Quizzes will be taken at the start of class. You will **not** be given extra time on quizzes if you are late to lab. There will be **no make-up quizzes** without a valid excuse. Quizzes will include lab identification, fill-in-the-blank statements and multiple choice questions. You will be given 20 minutes for each quiz. You will be quizzed on the following material:

- Quiz 1: Chapters 1 and 2 → **Sep 17<sup>th</sup>**
- Quiz 2: Chapter 3 → **Sep 24<sup>th</sup>**
- Quiz 3: Chapters 5, 6, 7 → **Oct 29<sup>th</sup>**
- Quiz 4: Chapter 9 → **Nov 26<sup>th</sup>**
- Quiz 5: Chapter 10 → **Dec 3<sup>rd</sup>**

### Assignments

You will be given one graded assignment to be completed out of class: a chart to complete about cranial nerves. This is a complex assignment, and **you do not want to attempt to cram it in last minute.** The guidelines and template for this assignment will be posted on blackboard 2 weeks before the deadline. The cranial nerve chart will be due at the start of class the week of **October 22<sup>nd</sup>.**

## Additional Materials and Copyright:

Additional lab materials (worksheets and handouts) will be posted on Blackboard. These materials are for your exclusive use as students in my lab. **ANP 300 course materials cannot be sold, exchanged, reused, reposted or distributed without written consent from me.**

If you have a physical, psychological, medical, or learning disability that may impact your course work, please contact the Student Accessibility Support Center, 128 ECC Building, (631) 632-6748, or at [sasc@stonybrook.edu](mailto:sasc@stonybrook.edu). They will determine with you what accommodations are necessary and appropriate. All information and documentation is confidential.

<b>WEEK OF</b>	<b>TOPIC</b>	<b>READINGS</b>	<b>QUIZ/ASSIGNMENT</b>
<b>AUG 27<sup>th</sup></b>	NO LAB		
<b>SEP 3<sup>RD</sup></b>	Lab 1: Introduction and General Osteology	Chapter 1	
<b>SEP 10<sup>TH</sup></b>	Lab 2: The Skin and Back	Chapter 2	
<b>SEP 17<sup>TH</sup></b>	Lab 3: The Upper Limb	Chapter 3	Quiz 1 <b>(Chapters 1+2)</b>
<b>SEP 24<sup>TH</sup></b>	Lab 4: The Lower Limb	Chapter 4	Quiz 2 <b>(Chapter 3)</b>
<b>OCT 1<sup>ST</sup></b>	NO LAB- EXAM 1 (TUESDAY OCTOBER 2 <sup>nd</sup> )		
<b>OCT 8<sup>TH</sup></b>	Lab 5: The Neck	Chapter 5	
<b>OCT 15<sup>TH</sup></b>	Lab 6: The Head	Chapter 6	
<b>OCT 22<sup>ND</sup></b>	Lab 7: The Brain & Cranial Nerves	Chapter 7	Cranial Nerve Chart Due
<b>OCT 29<sup>TH</sup></b>	Lab 8: The Senses	Chapter 8	Quiz 3 <b>(Chapters 5, 6, 7)</b>
<b>NOV 5<sup>TH</sup></b>	NO LAB- EXAM 2 (Tuesday, NOVEMBER 6 <sup>th</sup> )		
<b>NOV 12<sup>TH</sup></b>	Lab 9: The Thorax	Chapter 9	
<b>NOV 19<sup>TH</sup></b>	NO LAB- THANKSGIVING RECESS		
<b>NOV 26<sup>TH</sup></b>	Lab 10: The Abdomen	Chapter 10	Quiz 4 <b>(Chapter 9)</b>
<b>DEC 3<sup>RD</sup></b>	Lab 11: The Pelvis	Chapter 11	Quiz 5 <b>(Chapter 10)</b>

Stony Brook University expects students to respect the rights, privileges, and property of other people. Faculty are required to report to the Office of University Community Standards any disruptive behavior that interrupts their ability to teach, compromises the safety of the learning environment, or inhibits students' ability to learn. Faculty in the HSC Schools and the School of Medicine are required to follow their school-specific procedures. Further information about most academic matters can be found in the Undergraduate Bulletin, the Undergraduate Class Schedule, and the Faculty-Employee Handbook.